

YCE datamodel ERD

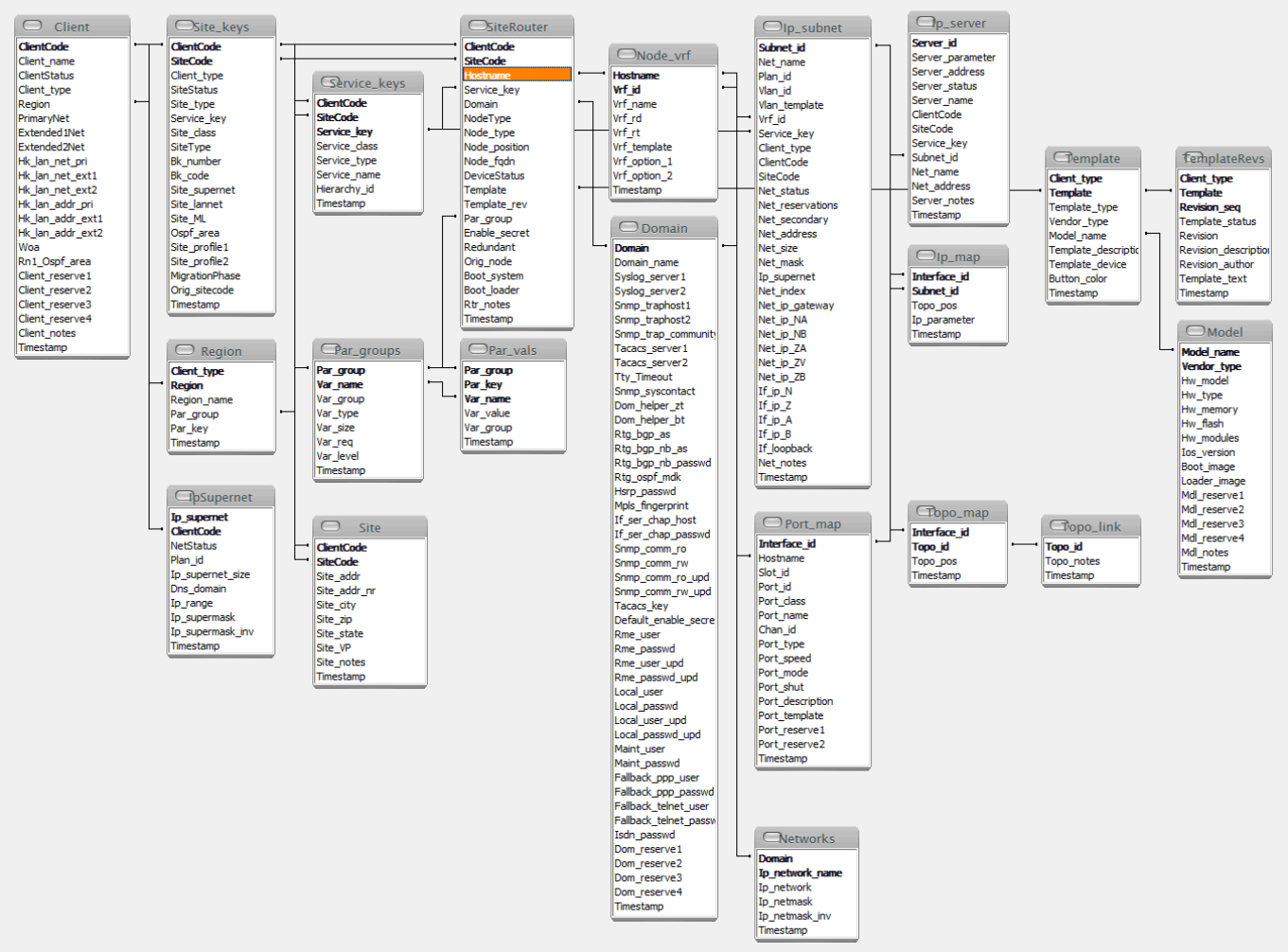
The main database, 'YCE', forms the heart of the application and is accessible but not alterable by the customer. A second database, 'NMS', is used to contain custom tables or tables used by integrations with NMS applications. This database is open to the customer.

The YCE database itself consists of three parts: The Modeling tables, the Network tables and the Support tables. It is the Network tables that are of most interest to customers since its content will reflect their networks. Knowledge if its tables and their function is required to create or modify NetYCE Relations.

The entity-relationship diagram, or ERD, of the Network tables is given below.



A different representation of the same set of tables (mostly):



A detailed description of the tables, their field and usage can be found in the article [Database documentation](#)

From:

<https://wiki.netyce.com/> - **Technical documentation**

Permanent link:

<https://wiki.netyce.com/doku.php?id=guides:reference:database:datamodel>

Last update: **2024/07/03 12:31**

